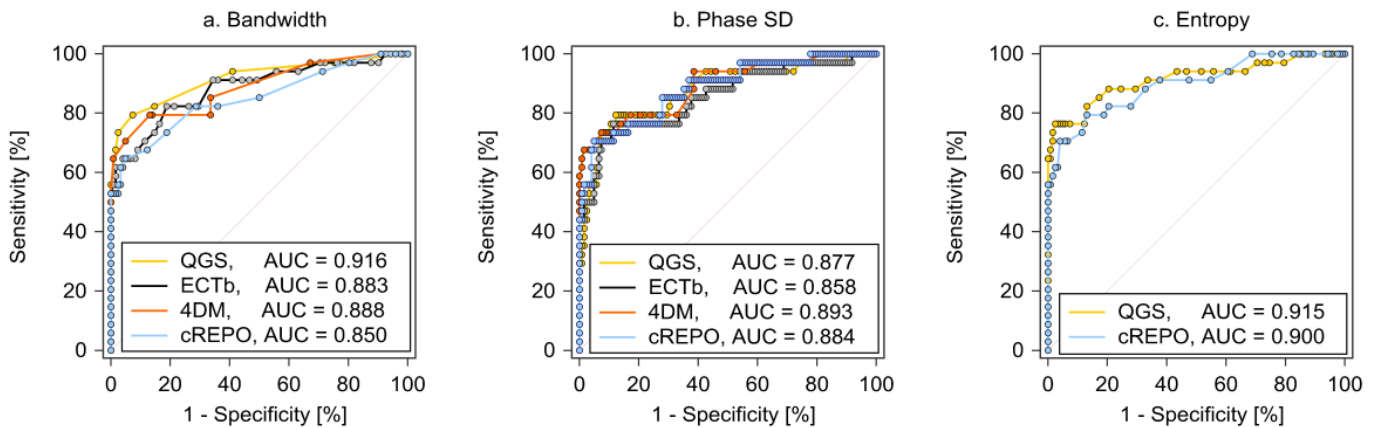


Lec 1705OK

Diagnostic performance of phase dyssynchrony analysis in gated cardiac SPECT: Comparison of four software packages

Koichi Okuda, Kenichi Nakajima, Shinro Matsuo, Seigo Kinuya



ROC curves of bandwidth (a), phase SD (b), and entropy (c) in QGS, ECTb, 4DM, and cREPO software programs.