

## Case 1705MH

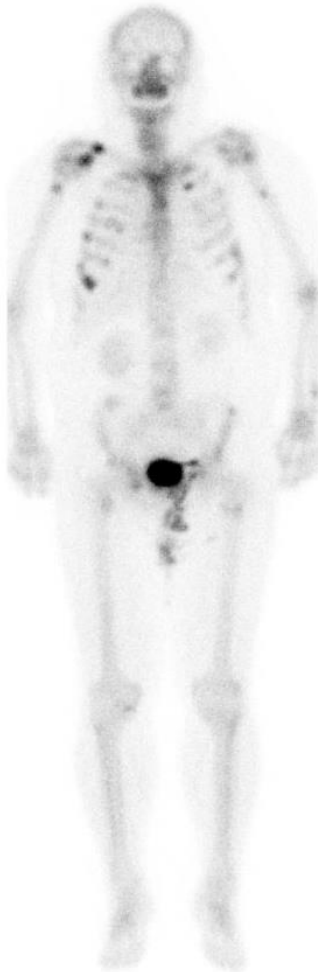
60s-year old man

- Diagnosis: prostate cancer
- Clinical history:
  - PSA (772 ng/ml) was elevated, and prostate cancer was found.
  - Bone scintigraphy and somatostatin receptor scintigraphy were performed.

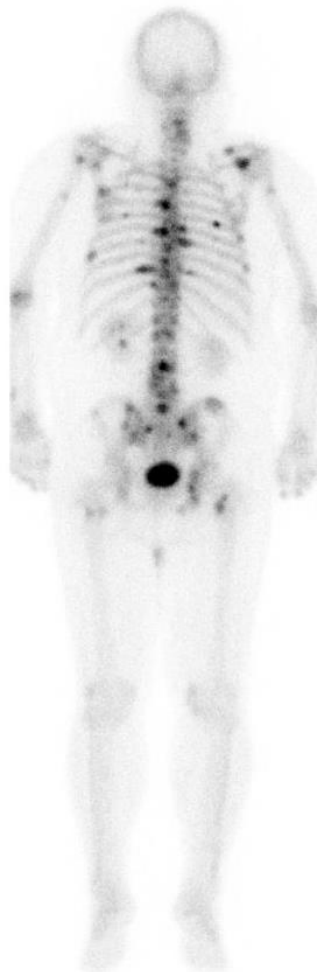
Bone scintigraphy

Whole body

Anterior



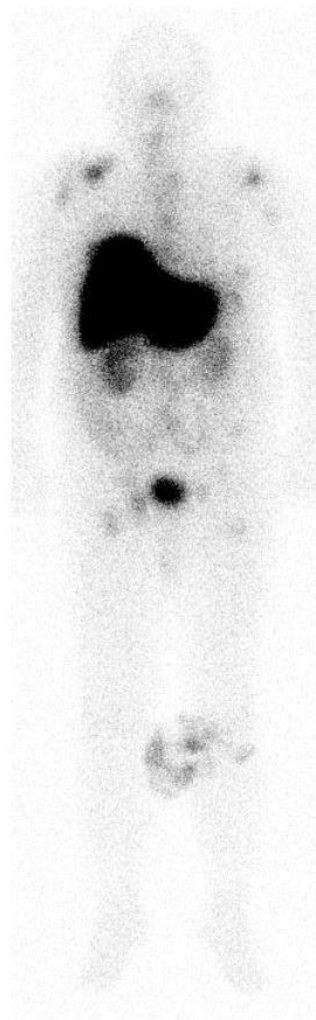
Posterior



Somatostatin receptor scintigraphy

Whole body

Anterior



Posterior

