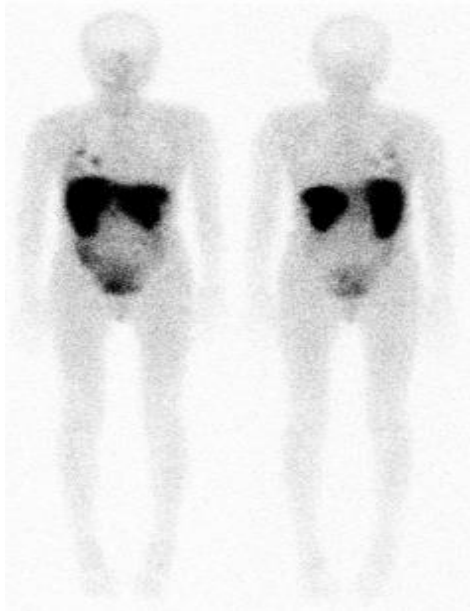


Case 1605WS

60s-year old woman

- Chief complaint: high ACTH and cortisol level
- Past history: Mycobacterium avium complex infection
- Clinical history: Her moon face was noticed 3 years ago. Although her serum levels of ACTH and cortisol have been high, no examination, such as X-ray CT, MRI, endoscopy, FDG-PET/CT, and ^{68}Ga -DOTATOC-PET/CT, specified the origin of high ACTH. A year after ^{68}Ga -DOTATOC-PET/CT, somatostatin receptor scintigraphy with ^{111}In -pentetreotide was performed and shown below.
- Somatostatin receptor scintigraphy with ^{111}In -pentetreotide

Whole body Anterior Posterior



SPECT/CT

